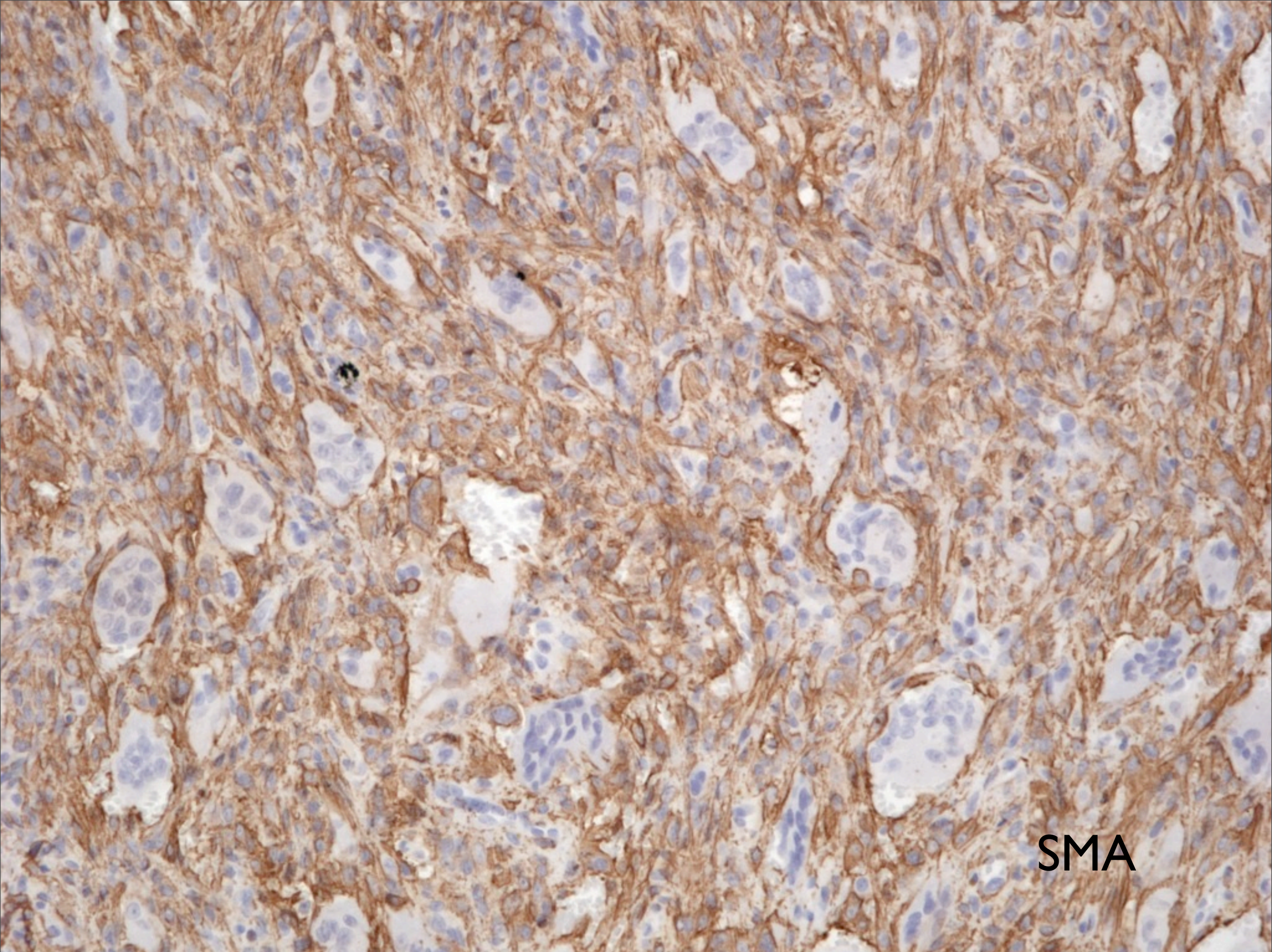


CD 68

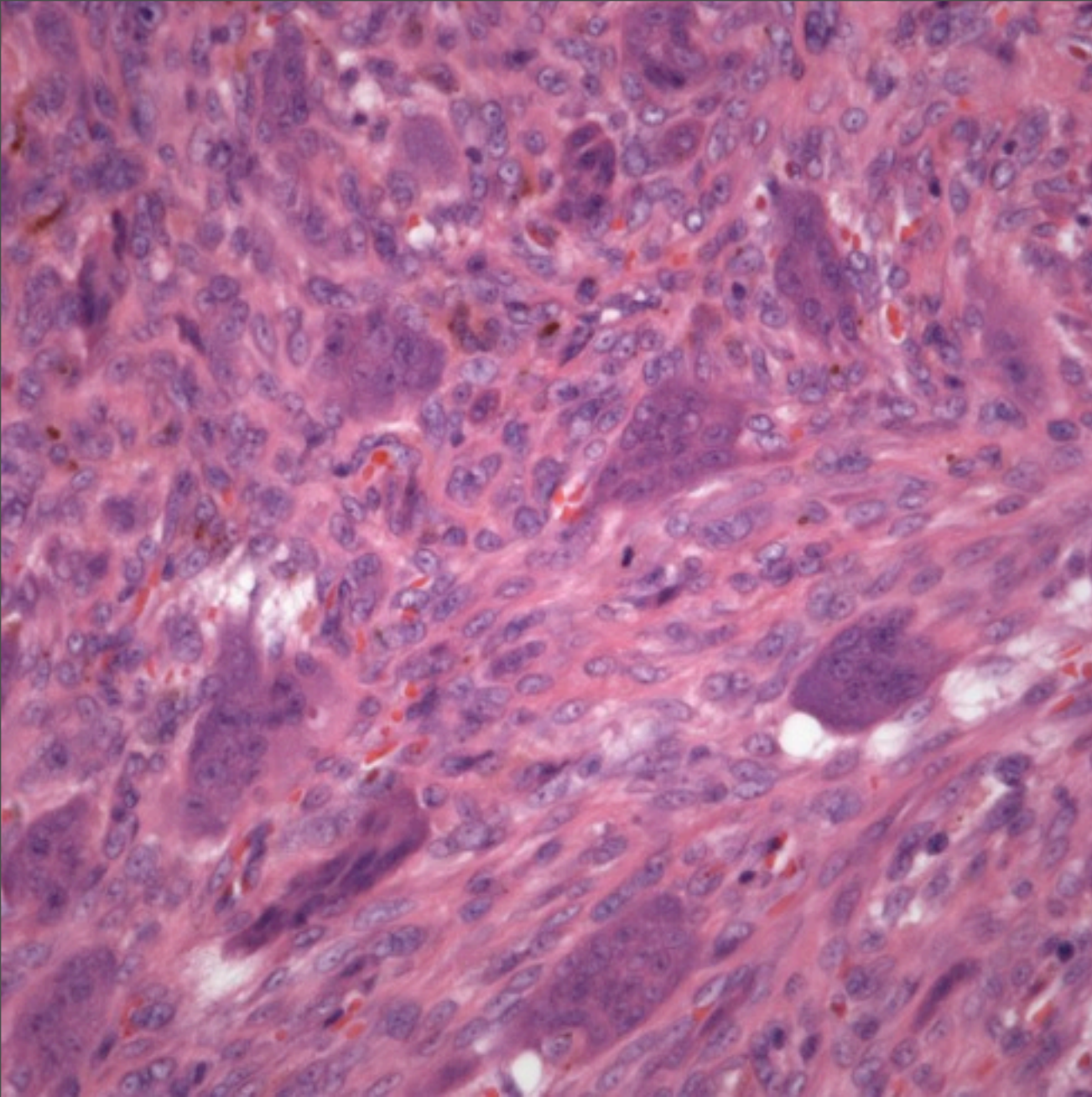


SMA

Soft Tissue Giant Cell Tumor of Low Malignant Potential

Notes

- This is a rare soft tissue neoplasm that histologically resembles giant cell tumor of the tendon sheath
- Mitotic rate is brisk but cellular atypia is minimal
- Differential diagnosis includes a malignant fibrous histiocytoma with giant cells. In this latter tumor, there is marked cytologic pleomorphism



Cells positive for CD68 and
Smooth Muscle Actin

Cellular spindle cell tumor with giant cells

Mitotic activity is brisk but no atypical MF